

1199 JinDu Road, Room 219, Minhang District, shanghai 201108,PR China 021-5438 2018
www.recallpackaging.com

13/64" diameter
(5.159375mm)

KNOCKOUTS & TRAPS ARE NOT INCLUDED IN FILE

13/64" diameter
(5.159375mm)

2.6.24
EB Dura Heat Ver11-YO_Wmn_LiteCrew_EBE115137MHP 4CR

Prints 4-COLOR including Kraft paper background A

**1 PAIR
PACK**
**WOMEN'S 5-10
SHOE SIZE**
Made in China
Fabriqué en Chine

**COZY
WARMTH
FOR THE
COLDEST
WEATHER**

PRINT SIDE UP

This document is intended only for use as a reference for the individual or entity to which it is being presented and may contain information which is privileged and confidential. No reproduction or distribution is permitted without the consent of Recall International Corporation.

此文档仅供贵集团内部参考, 包含相关特权和机密的内容。 没有经过贵集团的许可不得复制或流传。

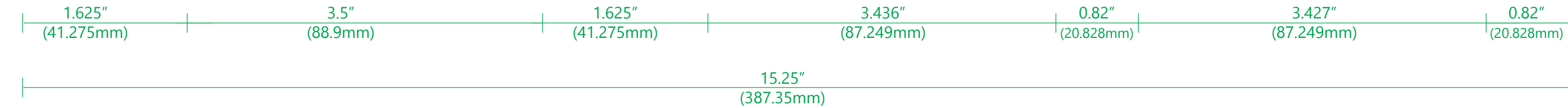
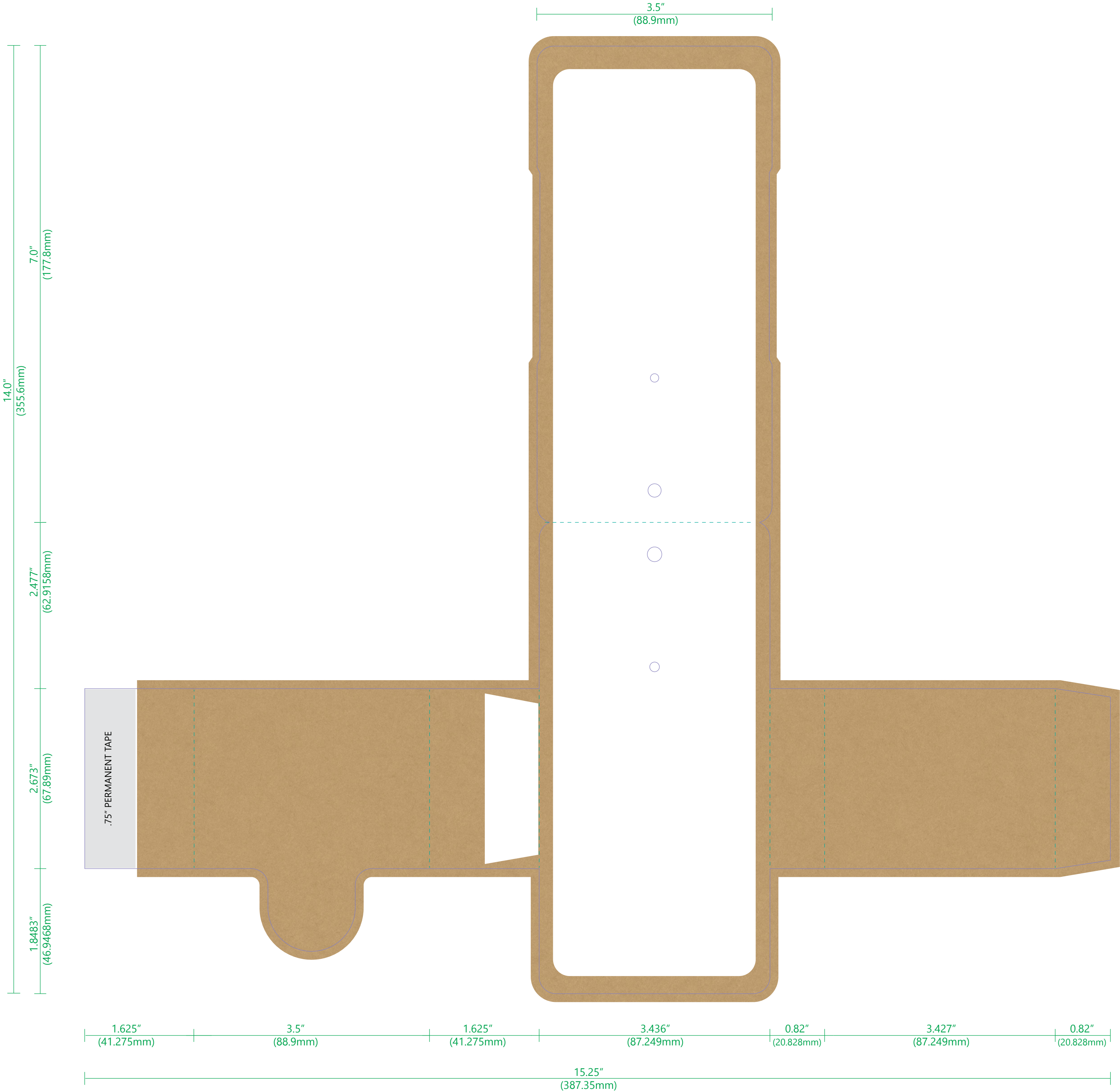
If changes are necessary, please indicate all changes on the artwork.

FILE APPROVALS:	DATE:	SIGNATURE:
Brand Manager	02/08/24	Heather Youtz
Packaging Manager	02/21/24	Greg Hauser
Proof approval	02/21/24	Greg Hauser



Recall Packaging Global (China)

1199 JinDu Road, Room 219, Minhang District, shanghai 201108,PR China 021-5438 2018
www.recallpackaging.com



Artwork

PO:	Item No(Reference #): EBE115137MHP
Artwork by : LX	Size: 428x413mm
Artwork date: 2024-2-20	Scale(artwork): 100%

This document is intended only for use as a reference for the individual or entity to which it is being presented and may contain information which is privileged and confidential. No reproduction or distribution is permitted without the consent of Recall International Corporation.
此文档仅供贵集团内部参考，包含相关特权和机密的内容。 没有经过贵集团的许可不得复制或生产或流传。

THIS ARTWORK WILL BE GOING TO PRINT!

PLEASE LOOK IT OVER CAREFULLY & CONTINUE ROUTING TO THE NEXT DEPARTMENT IN A TIMELY MANNER

By signing off on this artwork you are indicating that you have looked over and approved all artwork for placement, content and dimensions and have shown and received approval from any and all other necessary persons within your department.

If changes are necessary, please indicate all changes on the artwork.

FILE APPROVALS:	DATE:	SIGNATURE:
Brand Manager		
Packaging Manager		
Proof approval	02/21/24	<i>Greg Hauser</i>