



Recall Packaging Global (China)

1199 JinDu Road, Room 219, Minhang District, shanghai 201108,PR China 021-5438 2018
www.recallpackaging.com

Jim Albright

PRODUCTION SPECIFICATIONS

JOB NUMBER: EBE215031LBD REVISED
RELEASE DATE: 01.11.23
CONTACT: Jim Albright

MAC PROGRAM: Illustrator CC
FILE NAME: EBE215031LBD.ai
DIMENSIONS: 11" w x 3" H

Fonts: Interstate

NOTES:

-

DIE LINE

SCORE LINE

PRINTING COLORS:



CMYK



PANTONE 382 C
28/0/92/0
"Limeade"



PANTONE 7683 CP
83/55/0/0



PANTONE 422 C
16/11/11/29
"Light Carbon"



PANTONE 426 C
"Dark Carbon"



PANTONE 426 C
80%
Screen

SPOT VARNISH

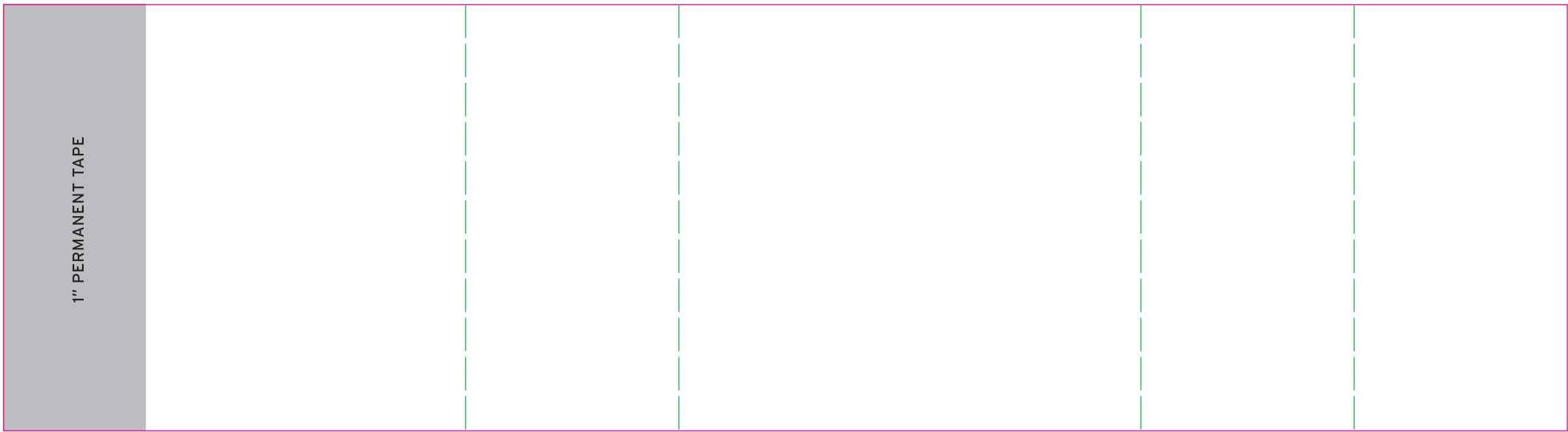
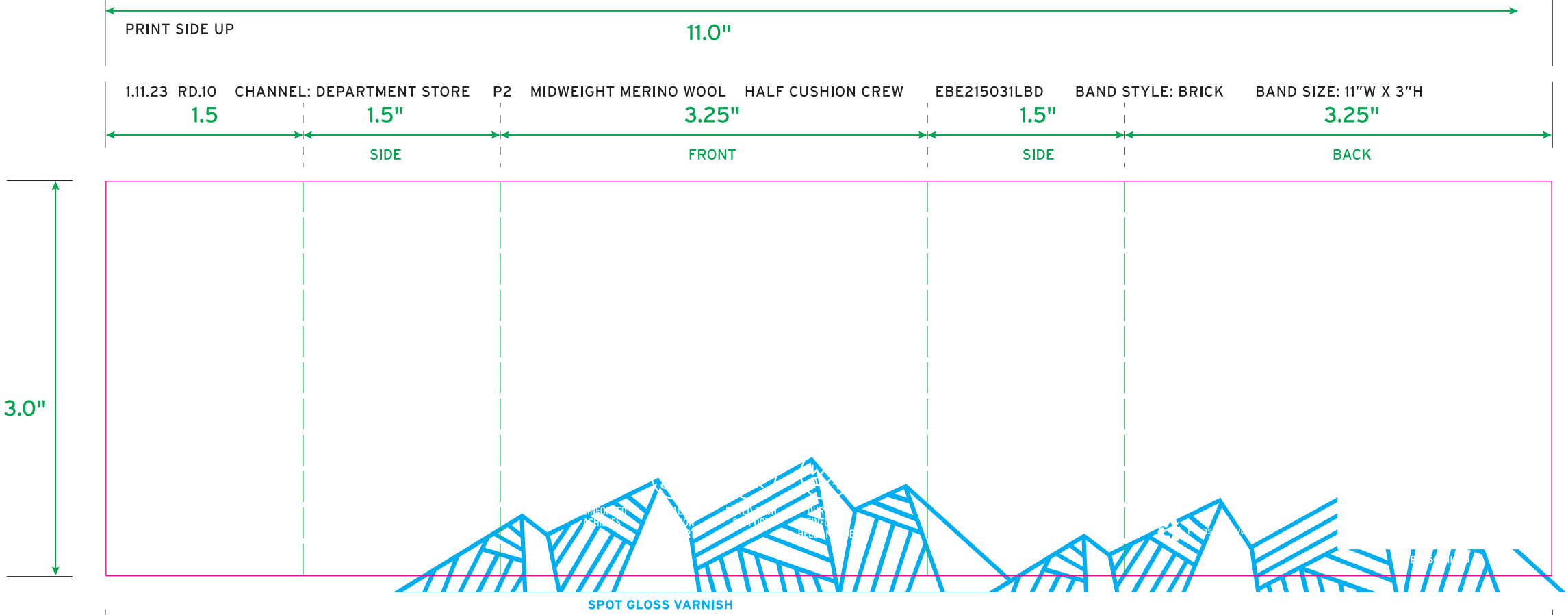
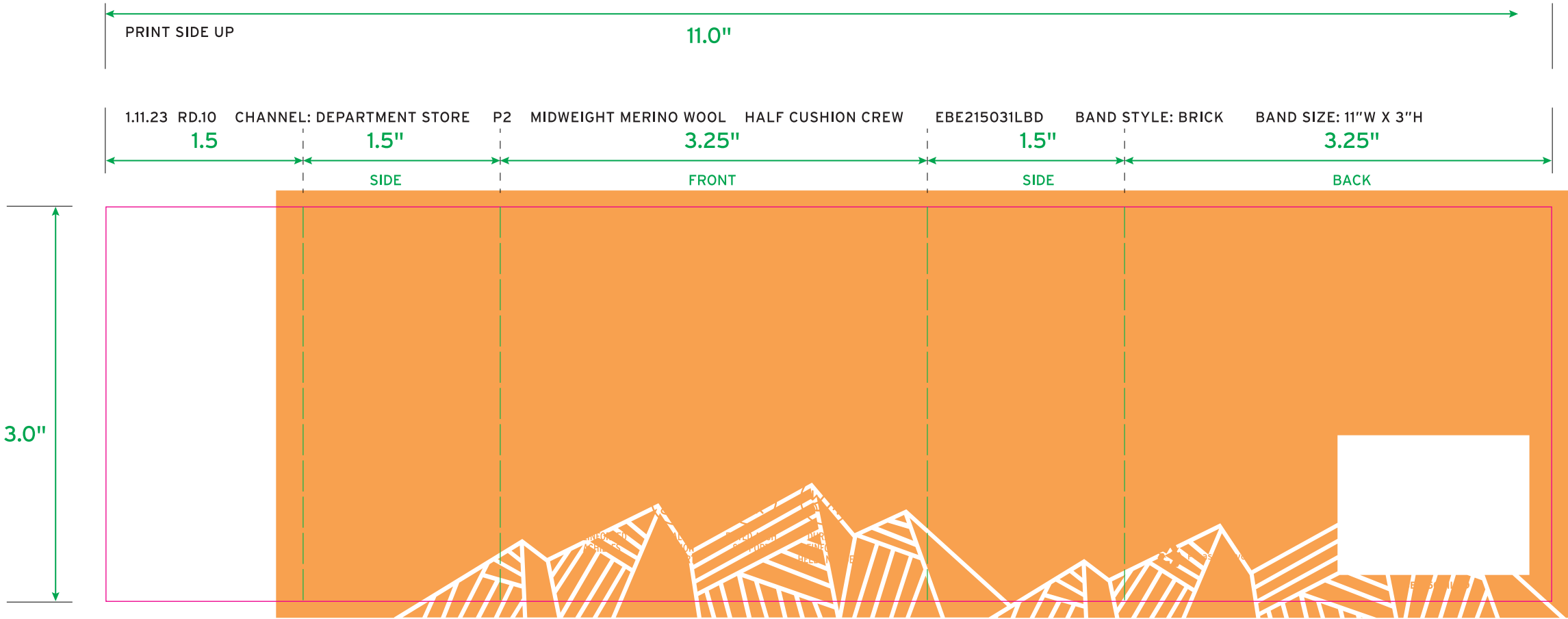
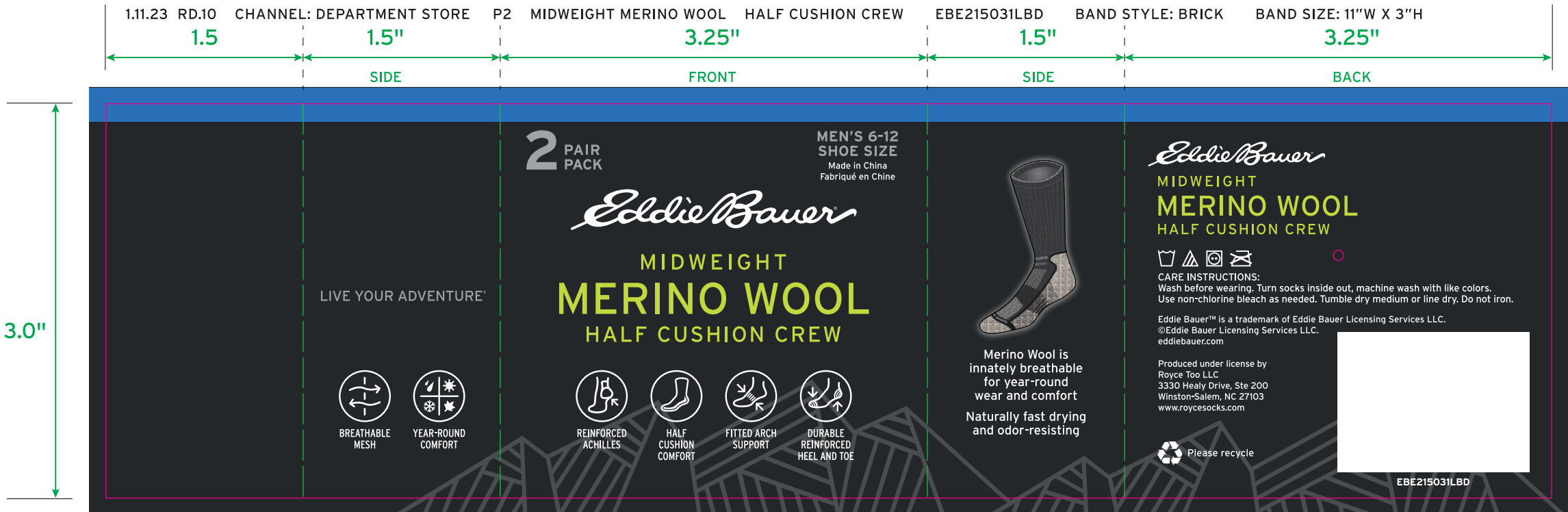


SPOT GLOSS VARNISH



SPOT MATTE VARNISH

KNOCKOUTS & TRAPS ARE NOT INCLUDED IN FILE



Artwork

PO:

Artwork by : QT

Artwork date: 2023-02-28

Item No(Reference #): EBE215031LBD

Size: 279.4x76.2MM

Scale(artwork): 100%

This document is intended only for use as a reference for the individual or entity to which it is being presented and may contain information which is privileged and confidential. No reproduction or distribution is permitted without the consent of Recall International Corporation.
此文件仅供贵商使用作为参考，包含相关资料和机密信息，没有经过贵商许可不得复制或生产。

THIS ARTWORK WILL BE GOING TO PRINT!

PLEASE LOOK IT OVER CAREFULLY & CONTINUE ROUTING TO THE NEXT DEPARTMENT IN A TIMELY MANNER

By signing off on this artwork you are indicating that you have looked over and approved all artwork for placement, content and dimensions and have shown and received approval from any and all other necessary persons within your department.

If changes are necessary, please indicate all changes on the artwork.

FILE APPROVALS:

DATE:

SIGNATURE:

Brand Manager

Packaging Manager

Proof approval

04 18 24

Greg Hauser