








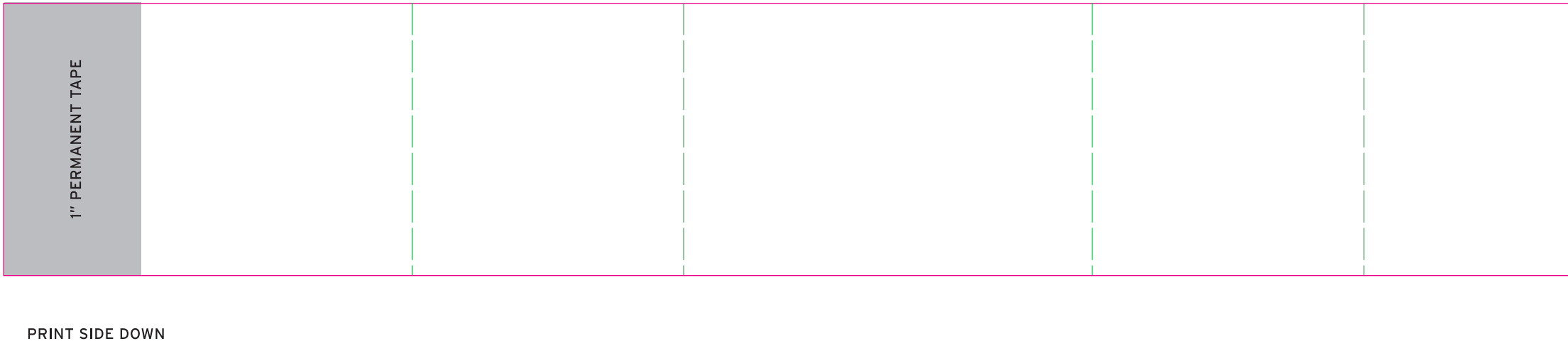
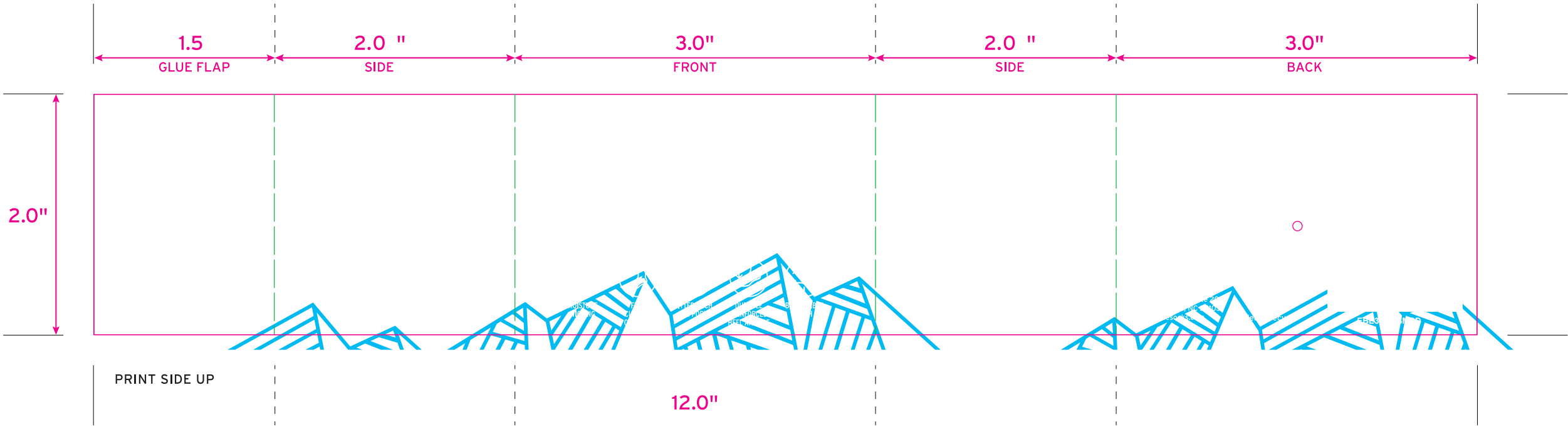
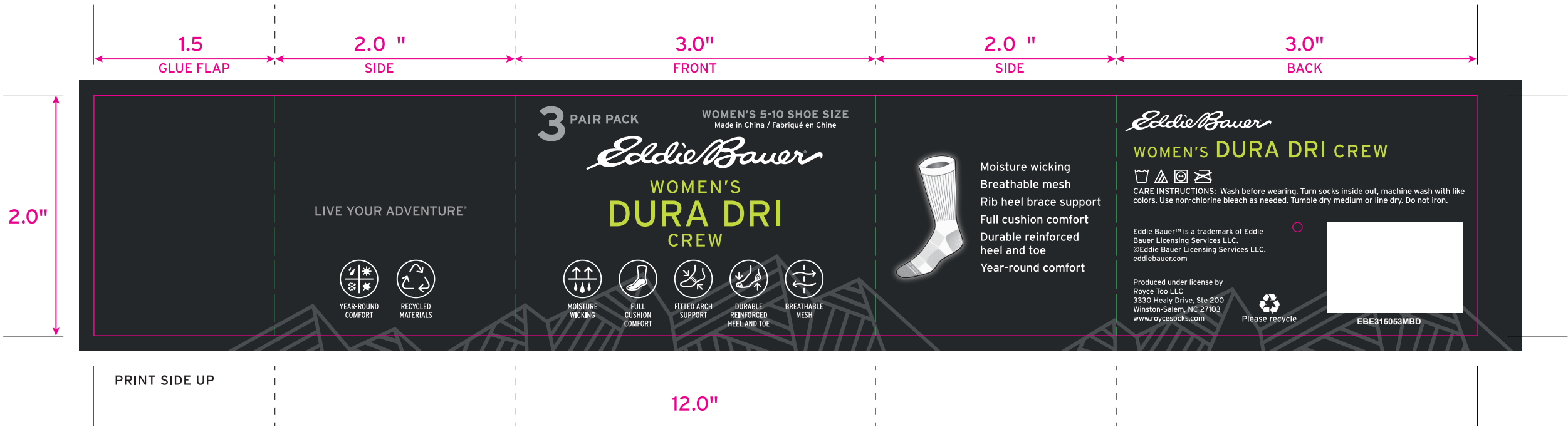


Recall Packaging Global (China)

1199 JinDu Road, Room 219, Minhang District, shanghai 201108,PR China 021-5438 2018
www.recallpackaging.com

FILE APPROVALS:	DATE:	SIGNATURE:
Brand Manager		
Packaging Manager	07 29 24	<i>Greg Hauser</i>

Jim Albright	PRINTING COLORS: <div>CMYK</div> <div>PANTONE 382 C 28/0/0/2/0 "Limeade"</div> <div>PANTONE 422 C 16/11/11/29 "Light Carbon"</div> <div>PANTONE 426 C "Dark Carbon"</div> <div>PANTONE 426 C 80% Screen</div> <div>SPOT GLOSS VARNISH</div> <div>SPOT MATTE VARNISH</div> KNOCKOUTS & TRAPS ARE NOT INCLUDED IN FILE
PRODUCTION SPECIFICATIONS	
JOB NUMBER: EBE315053MBD RELEASE DATE: 2024-07-27 CONTACT: Jim Albright	
MAC PROGRAM: Illustrator CC FILE NAME: EBE315053MBD.ai DIMENSIONS: 12" w x 2.0" H	
FONTS: Interstate	
NOTES: <div><div><div></div><div>DIE LINE</div></div><div><div></div><div>SCORE LINE</div></div></div>	



Artwork	
PO:	Item No(Reference #): EBE315053MBD
Artwork by : QT	Size: 304.8x50.8MM
Artwork date: 2024-07-27	Scale(artwork): 100%

This document is intended only for use as a reference for the individual or entity to which it is being presented and may contain information which is privileged and confidential. No reproduction or distribution is permitted without the consent of Recall International Corporation.
此文件仅供贵单位内部参考，包含相关特权和机密的内容，没有经过贵单位的许可不得复制生产或流传。

THIS ARTWORK WILL BE GOING TO PRINT!

PLEASE LOOK IT OVER CAREFULLY & CONTINUE ROUTING TO THE NEXT DEPARTMENT IN A TIMELY MANNER

By signing off on this artwork you are indicating that you have looked over and approved all artwork for placement, content and dimensions and have shown and received approval from any and all other necessary persons within your department.

If changes are necessary, please indicate all changes on the artwork.

FILE APPROVALS:	DATE:	SIGNATURE:
Brand Manager		
Packaging Manager		
Proof approval		