

## 女上装

4786-109-250 PO-57304 2025.1.6

## RFID WOVEN PRINTED

Size: 65x20mm

(zara logo woven.size,country of origin,“●” printed)

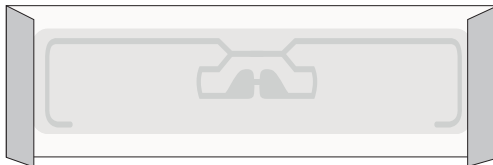
Ref. WPZCALL015

WOMAN / MAN

## FULL WOVEN

Size: 8x35mm

Ref. WLZCALL037



## Artwork

PO:57304

Artwork by : May

Artwork date: 2025.1.6

Item No(Reference #):4786-109-250 主标

Size:65X20mm

Scale(artwork): 100%

THIS ARTWORK WILL  
BE GOING TO PRINT!

PLEASE LOOK IT OVER CAREFULLY &  
CONTINUE ROUTING TO THE NEXT  
DEPARTMENT IN A TIMELY MANNER

By signing off on this artwork you are  
indicating that you have looked over and  
approved all artwork for placement, content  
and dimensions and have shown and  
received approval from any and all other  
necessary persons within your department.

If changes are necessary, please indicate  
all changes on the artwork.