

# F&F

1 CUTTER KEY:  
 IDEES NOT PRINT!  
 MD Red  
 CUTTER GUIDE  
 PERFORATIONS  
 MD Blue  
 CREASES  
 FOLD LINES  
 MD Green  
 POSITIONAL

**ARTWORK VERSION**  
**1**

Artwork Reference: FFB/21/M14993  
 Branded Job No: WM077524-71  
 Tesco Buyer/TPM: MEGAN HARRINGTON  
 Supplier: SELECT SUPPLIER FROM F&F NOMINATED SUPPLIER LIST

Job Description: GLOBAL FRED & FLO 2 PACK TIGHTS SMALL WRAP BAND

Substrate: FULLY COATED FBB WITH BLEACHED OR CREAM BACK  
 Weight: N/A  
 Thickness: 550 MICRON  
 Whiteness (D65/10°): -  
 Brightness (D65/10°): 91% TOLERANCE: -2/+3% ISO 2470-1  
 LAB (D65/10°): L\* 95.8 A\* 0.6 B\* -1.0 (+/-3) ISO 5631-2

THICKNESS AND GSM: IT IS THE PRINTERS RESPONSIBILITY TO ENSURE ALL SUBSTRATES ARE FIT FOR PURPOSE AND MEET ANY TECHNICAL REQUIREMENTS FOR PERFORMANCE SUPPORTING ITS PRODUCT.

Hook Ref: AH4B  
 Cutter Ref: CP/21/M14991

Printing Colours - FRONT:

F&F GREY B	F&F GREY C
L* 75.43 a* 0.68 b* -2.42	L* 58.14 a* 0.45 b* -3.81

Printing Colours - REVERSE:

Production Process: OFFSET LITHO

Finishing: MATT SEALER, CREASED, DIE CUT

Finish Type:

IMPORTANT INFORMATION: ALL L.A.B. VALUES ARE TO BE REFERENCED FROM THE CENTRAL LIBRARY. IF YOU REQUIRE ACCESS TO THIS PLEASE CONTACT TESCO.SUPPORT@BRANDED-AGENCY.COM. ALL PRINT MUST BE SEALED. THE COLOURS SHOWN ARE NOT A TRUE REPRESENTATION OF THE ACTUAL COLOUR, AS THIS IS NOT A PRINTED PROOF. NO TRAPPING, CHOKING OR OVERPRINTING INFORMATION HAS BEEN APPLIED.

ALL TRANSLATIONS INTO CE LANGUAGES MUST BE TAKEN FROM THE TRANSLATION GRID. FOLLOW THE LAYOUT/TEXT CASE SPECIFIED BY THE LEADING ENGLISH TEXT ON THE ARTWORK

DATE	OP	AMEND CODE(S)
v1) 04/04/24	SR	New Build
v2)		
v3)		
v4)		
v5)		

**KEY NOTES**

- Please contact a member of the Packaging Team to be sent your colour standards to match for this artwork.
- Before bulk production can start you must have approval of your pre-production print sample. Please refer to the Print Quality Management section of <https://beta.ourtesco.com/design/clothing> for latest approval process information.
- Any information without an annotation is a fixed field and should not be altered in any way.
- If string is annotated on this artwork, this must be submitted with the pre-production sample.

**SUPPLIER RESPONSIBILITIES**

- All artwork should be printed from the Illustrator file (.ai) located on <https://beta.ourtesco.com/design/clothing>
- Dimensions of your printed item should be the same measurements as annotated on the artwork
- Substrate specification should match the artwork
- There should be no pixelation on any images
- Packaging must be the correct orientation
- The colours must match the approved standard
- The print must be sealed with a matt varnish
- The barcode must read using the Atison code verifier
- Variable data to be inserted from pick list options only. Data to be confirmed by garment vendor to packaging supplier as per order.

MHI

CONTACT:  
tesco.support@branded-agency.com

# BRANDED

PrintSpec™

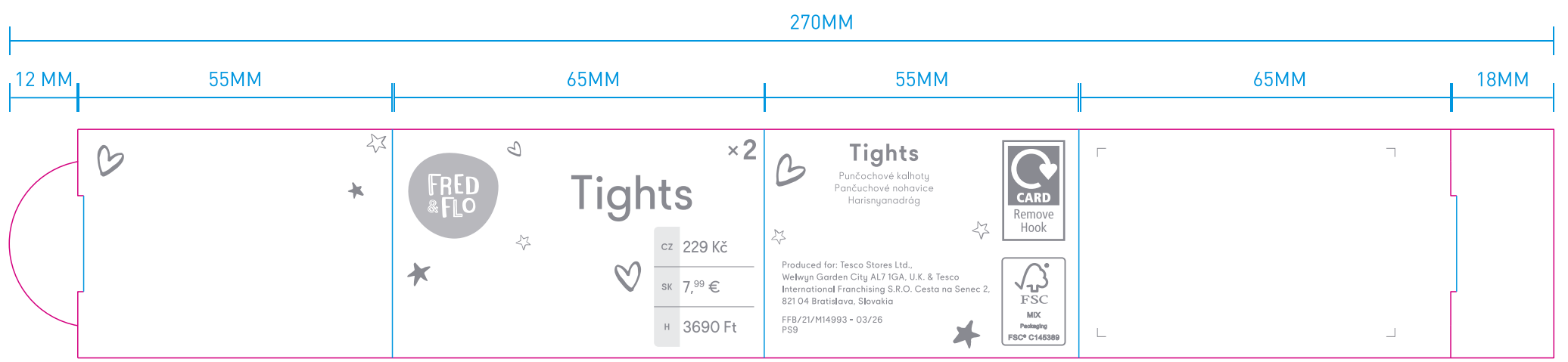


# Recall

## Recall Packaging Global (China)

Room 1213, Zhonghuan Science Park, 485 Xingmei Road, Minhang District, Shanghai  
 www.recallpackaging.com

F&F GREY B	F&F GREY C
L* 75.43 a* 0.68 b* -2.42	L* 58.14 a* 0.45 b* -3.81



Artwork

PO: SH-64067

Artwork by :

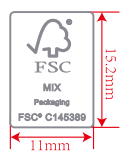
Artwork date: 2026.03.18

Item No(Reference #): FFB/21/M14993

Size: 270x40mm

Scale(artwork): 100%

This document is intended only for use as a reference for the individual or entity to which it is being presented and may contain information which is privileged and confidential. No reproduction or distribution is permitted without the consent of Recall International Corporation.  
 此文档仅供贵集团内部作参考，包含相关特权和机密内容，没有经过贵集团的许可不得复制或生产或流传。



**THIS ARTWORK WILL BE GOING TO PRINT!**

PLEASE LOOK IT OVER CAREFULLY & CONTINUE ROUTING TO THE NEXT DEPARTMENT IN A TIMELY MANNER

By signing off on this artwork you are indicating that you have looked over and approved all artwork for placement, content and dimensions and have shown and received approval from any and all other necessary persons within your department.

If changes are necessary, please indicate all changes on the artwork.