

F&F

1 CUTTER KEY: (DOES NOT PRINT)

NO Die CUTTER GUIDE PERFORMATIONS

NO Blue CREASES FOLD LINES

NO Green POSITIONAL

ARTWORK VERSION

1

Artwork Reference: FFLX/24/M15612G

Branded Job No: WM098365-4

Tesco Buyer/TPM: JENNY HE

Supplier: SELECT SUPPLIER FROM F&F NOMINATED SUPPLIER LIST

Job Description: GLOBAL F&F ESSENTIALS LUXURY 2PK FOR 40D/60D OPAQUE TIGHT SMALL CASCADE

Substrate: FULLY COATED FBB WITH BLEACHED OR CREAM BACK

Weight: 500 GSM

Thickness: 680 MICRON

Whiteness (D65/10°): -

Brightness (D65/10°): 91% TOLERANCE: -2/+3% ISO 2470-1

LAB (D65/10°): L* 95.8 A* 0.6 B* -1.0 (+/-3) ISO 5631-2

THICKNESS AND GSM: IT IS THE PRINTERS RESPONSIBILITY TO ENSURE ALL SUBSTRATES ARE FIT FOR PURPOSE AND MEET ANY TECHNICAL REQUIREMENTS FOR PERFORMANCE SUPPORTING ITS PRODUCT.

Hook Ref: CRD/28/M15183G

Cutter Ref: CP/24/M15609

Printing Colours - FRONT:

F&F GREY C	F&F LUXURY PURPLE	PROCESS BLACK	PANTONE 299 C
L* 58.14 a* 5.45 b* 3.81	L* 33.85 a* 12.93 b* 4.28		

Printing Colours - REVERSE:

Production Process: OFFSET LITHO

Finishing: MATT SEALER, CREASED, DIE CUT

Finish Type:

IMPORTANT INFORMATION: ALL L.A.B. VALUES ARE TO BE REFERENCED FROM THE CENTRAL LIBRARY. IF YOU REQUIRE ACCESS TO THIS PLEASE CONTACT TESCO.SUPPORT@BRANDED-AGENCY.COM. ALL PRINT MUST BE SEALED. THE COLOURS SHOWN ARE NOT A TRUE REPRESENTATION OF THE ACTUAL COLOUR. AS THIS IS NOT A PRINTED PROOF, NO TRAPPING, CHOKING OR OVERPRINTING INFORMATION HAS BEEN APPLIED.

ALL TRANSLATIONS INTO CE LANGUAGES MUST BE TAKEN FROM THE TRANSLATION GRID. FOLLOW THE LAYOUT/TEXT CASE SPECIFIED BY THE LEADING ENGLISH TEXT ON THE ARTWORK

DATE	OP	AMEND CODE(S)
v1)	05/11/25	SR New Build
v2)		
v3)		
v4)		
v5)		

GMG REQUIRED:
A 24h GMG certified contract proof must be requested in order to colour match this job on press. Please contact tesco.support@branded-agency.com. There will be a charge for each proof, plus delivery.

• Please contact a member of the Packaging Team to be sent your colour standards to match for this artwork.
• Before bulk production can start you must have approval of your pre-production print samples. Please refer to the Print Quality Management section of <https://beta.ourtesco.com/design/clothing> for latest approval process information.
• Any information without an annotation is a fixed field and should not be altered in any way.
• If a string is annotated on this artwork, this must be submitted with the pre-production sample.

SUPPLIER RESPONSIBILITIES

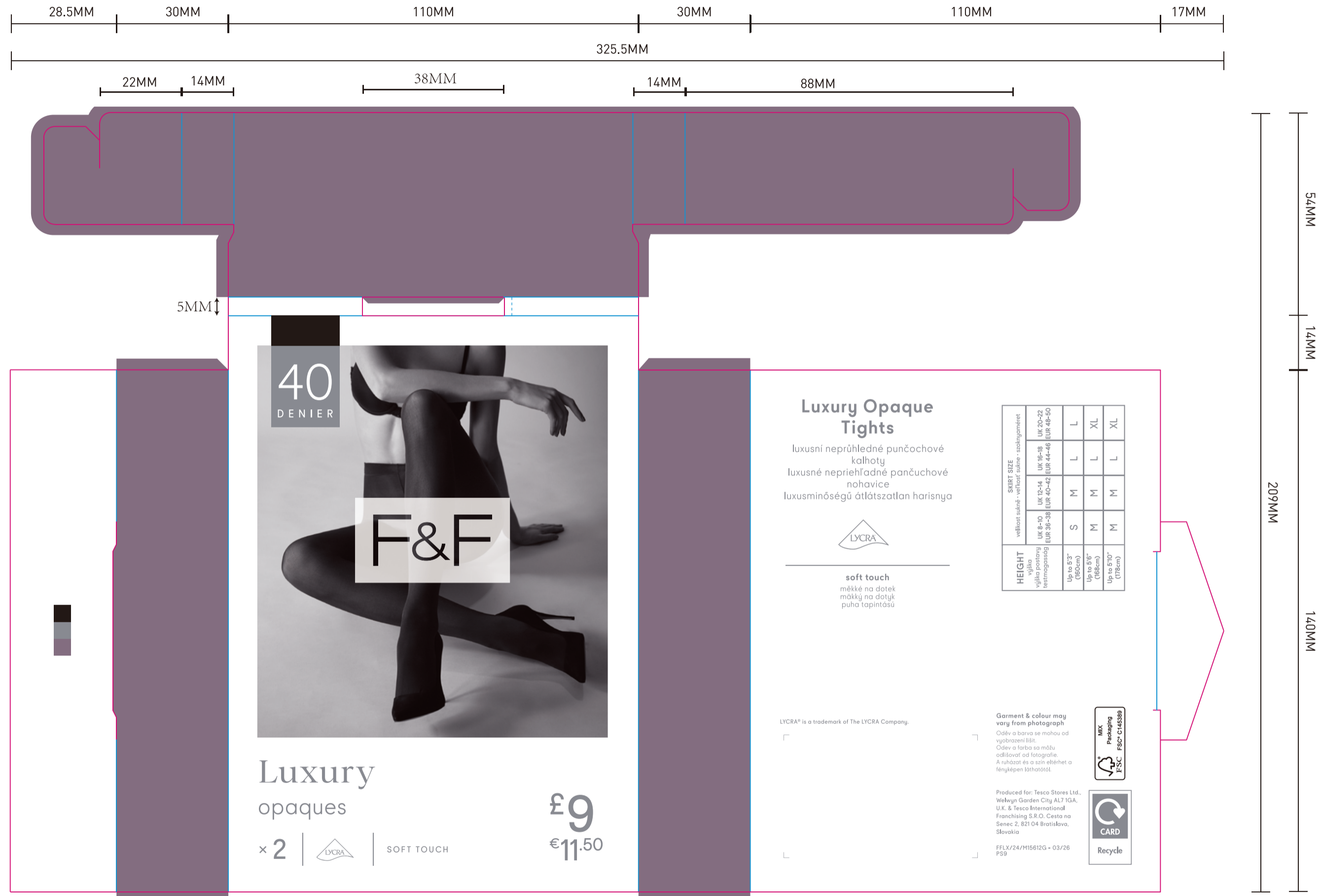
- All artwork should be printed from the illustrator file (.ai) located on <https://beta.ourtesco.com/design/clothing>
- Dimensions of your printed item should be the same measurements as annotated on the artwork
- Substrate specification should match the artwork
- There should be no overprint on any images
- Packaging must be the correct orientation
- The colours must match the approved standard
- The print must be sealed with a matt varnish
- The barcode must read using the Arcon code verifier
- Variable data to be inserted from pack list options only. Data to be confirmed by garment vendor to packaging supplier as per order

MH1

CONTACT:

tesco.support@branded-agency.com

BRANDED



Artwork

PO: M15612G-UK-BLACK-40D Item No(Reference #): FFLX/24/M15612G

Artwork by : Size: 209x325.5mm

Artwork date: 2026.03.24 Scale(artwork): 100%

This document is intended only for use as a reference for the individual or entity to which it is being presented and may contain information which is privileged and confidential. No reproduction or distribution is permitted without the consent of Recall International Corporation.
此文件仅供内部参考，包含相关特权和机密的内容。 没有经过授权的许可不得复制或生产或传播。

THIS ARTWORK WILL BE GOING TO PRINT!

PLEASE LOOK IT OVER CAREFULLY & CONTINUE ROUTING TO THE NEXT DEPARTMENT IN A TIMELY MANNER

By signing off on this artwork you are indicating that you have looked over and approved all artwork for placement, content and dimensions and have shown and received approval from any and all other necessary persons within your department.

If changes are necessary, please indicate all changes on the artwork.

4500358977