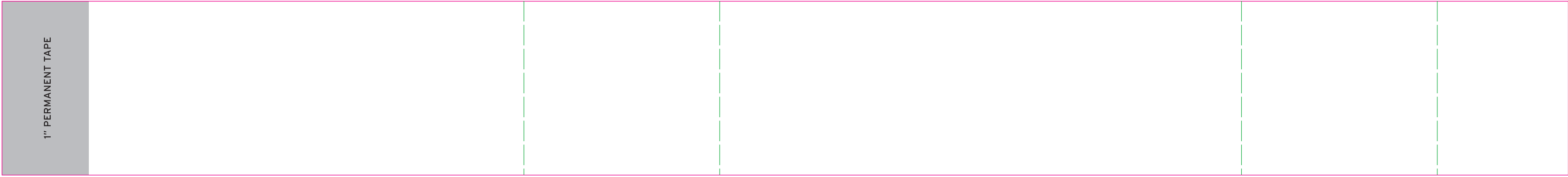
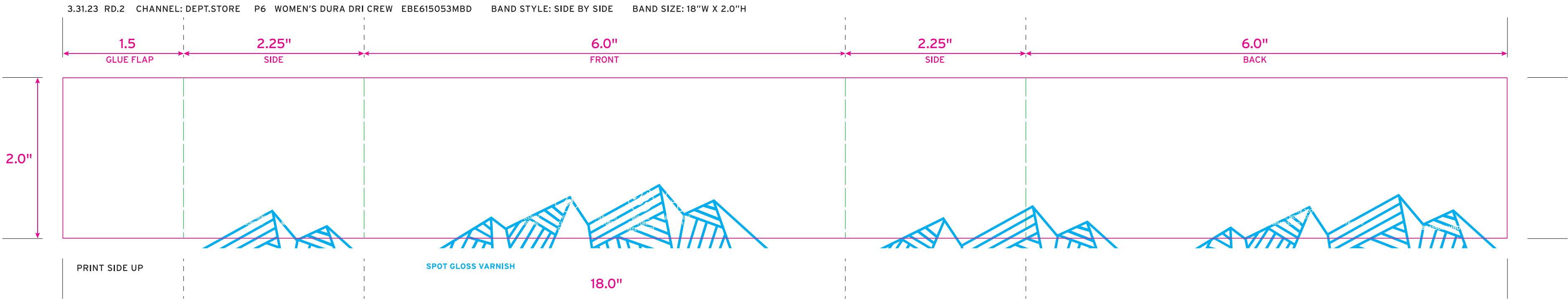
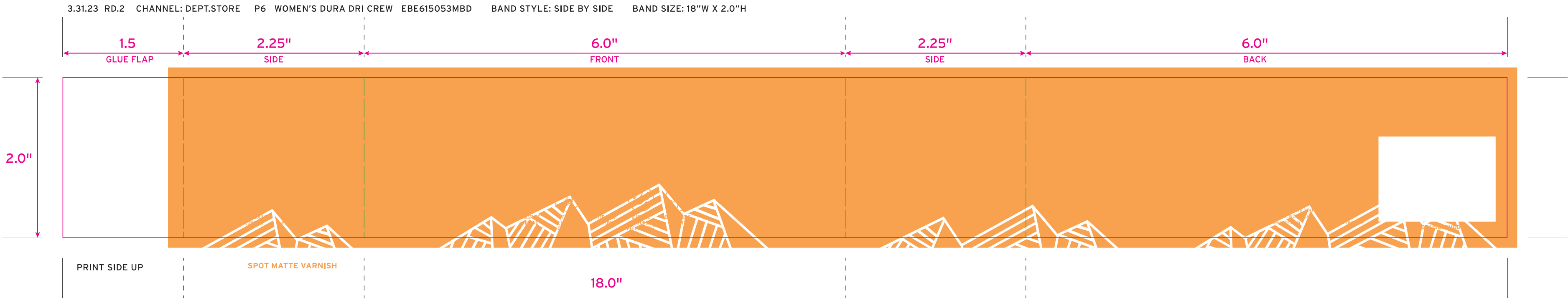
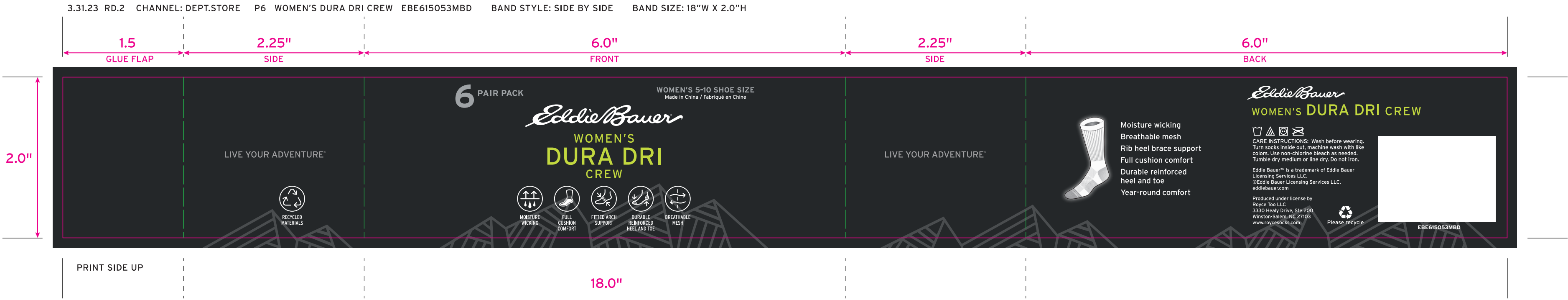




Recall Packaging Global (China)
1199 JinDu Road, Room 219, Minhang District, shanghai 201108,PR China 021-5438 2018
www.recallpackaging.com

FILE APPROVALS:	DATE:	SIGNATURE:
Brand Manager	10/12/22	Heather Youtz
Packaging Manager	04/03/23	Greg Hauser
Proof Approved	04/03/23	Greg Hauser

Jim Albright	PRINTING COLORS: <div><div>CMYK</div><div>PANTONE 382 C 28/0/92/0 "Limeade"</div><div>PANTONE 422 C 16/11/11/29 "Light Carbon"</div><div>PANTONE 426 C 80% "Dark Carbon"</div><div>PANTONE 426 C 80% Screen</div></div> <div><div>SPOT VARNISH</div><div>SPOT GLOSS VARNISH</div><div>SPOT MATTE VARNISH</div></div>
PRODUCTION SPECIFICATIONS	
JOB NUMBER: EBE615053MBD RELEASE DATE: 3.31.23 CONTACT: Jim Albright	
MAC PROGRAM: Illustrator CC FILE NAME: EBE615053MBD.ai DIMENSIONS: 18" w x 2.0" H	
NOTES:	• <div><div>DIE LINE</div><div>SCORE LINE</div></div> KNOCKOUTS & TRAPS ARE NOT INCLUDED IN FILE



PRINT SIDE DOWN

Artwork

PO:	Item No(Reference #): EBE615053MBD
Artwork by : QT	Size: 457.2x50.8MM
Artwork date: 2023-04-01	Scale(artwork): 100%

This document is intended only for use as a reference for the individual or entity to which it is being presented and may contain information which is privileged and confidential. No reproduction or distribution is permitted without the consent of Recall International Corporation.
此文件仅供贵司内部使用，不得复制或向其他人员分发。如有任何复制或分发行为，恕不追究法律责任。

THIS ARTWORK WILL BE GOING TO PRINT!

PLEASE LOOK IT OVER CAREFULLY & CONTINUE ROUTING TO THE NEXT DEPARTMENT IN A TIMELY MANNER

By signing off on this artwork you are indicating that you have looked over and approved all artwork for placement, content and dimensions and have shown and received approval from any and all other necessary persons within your department.

If changes are necessary, please indicate all changes on the artwork.

FILE APPROVALS:	DATE:	SIGNATURE:
Brand Manager		
Packaging Manager		
Proof approval		